

Hybrid mattress Stratus



Price: Ask us for price

Product Categories: [Hybrid mattresses](#)

Product Tags: [anti decubitus](#), [antidecubitus](#), [BMI](#), [bos](#), [Bos medical](#), [Bos medical international](#), [Decubitus](#), [Hybrid mattress](#), [Medical](#), [Medical International](#)

Product Page: <https://bosinternational.eu/webshop/hybrid-mattresses/hybrid-mattress/>

Product Summary

Product Description

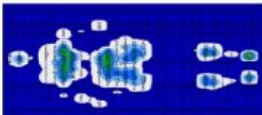
1. Designed and Manufactured in the UK
2. 5 Year Extended Warranty *
3. Use with 'Very High Risk' Patients
4. Dual Cell Technology
5. Maximum Patient Weight of 250Kg
6. Unlimited Technical Support **

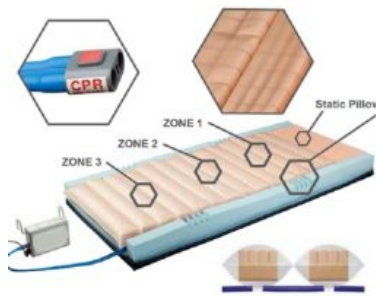
Dual Cell Hybrid Air Cells



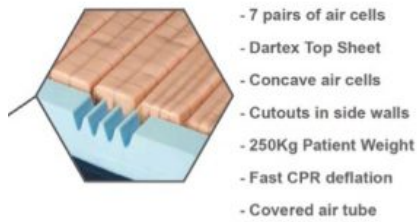
Our holistic approach to design has resulted in the development of Dual Cell technology which provide added stability and prevents 'cell-twisting' or unintentional shifting in cell position which create voids/gaps within the support area. Rival systems currently on the market use various secondary securing mechanisms.

Pressure Mapping Results





1. Designed and Manufactured in the UK
2. Three Different Pressure Zones
3. Quick Setup. Reaches Pressure in 2 Mins
4. Static or Dynamic Operation



- 7 pairs of air cells
- Dartex Top Sheet
- Concave air cells
- Cutouts in side walls
- 250Kg Patient Weight
- Fast CPR deflation
- Covered air tube

| | |
|--------------------------------------|-------------------------------|
| Serial Number..... | Label on air tube of mattress |
| Number of Air Cells..... | 14 Air Cells (7 Pairs) |
| Air Cell Material..... | 300um PU Film |
| Pillow Section..... | Static Pressure Relief Foam |
| Foam 'U' Core..... | .75mm |
| Dimensions..... | 1990 x 900 x 150mm (Nominal) |
| Weight..... | 14kg |
| Top Cover Material..... | Dartex Performance 602 |
| Expected life of Mattress Cells..... | 5 years |
| Shelf life of Mattress parts..... | 5 years |

Hybrid Patient Profile

| | |
|---------------------------|----------------------|
| Static Foam System | |
| Max. Patient Weight..... | 159 kg (25 Stone) |
| Patient Risk Level..... | Medium Risk Patients |

| | |
|-----------------------------------|--------------------|
| Static Care Comfort System | |
| Max. Patient Weight..... | 190 kg (30 Stone) |
| Patient Risk Level..... | High Risk Patients |

| | |
|---------------------------|-------------------------|
| Hybrid Pump System | |
| Max. Patient Weight..... | 250 kg (39 Stone) |
| Patient Risk Level..... | Very High Risk Patients |

Product Gallery





